

Dermato-venereological Quiz

THB Chan 陳子浩 and MTM Ng 吳孟婷

A 63-year-old man presented with pigmented spot on his right sole since childhood. It was noted to increase in size for one year recently. It was asymptomatic all along. There was no systemic symptom. He had a medical history of coronary artery disease and benign prostate

hypertrophy. Physical examination revealed a thin dark brownish patch of 1 cm in diameter at the center of the right sole (Figure 1). There was no regional lymph nodes palpable. A skin biopsy was undertaken at the right sole (Figures 2-7).



Figure 1.

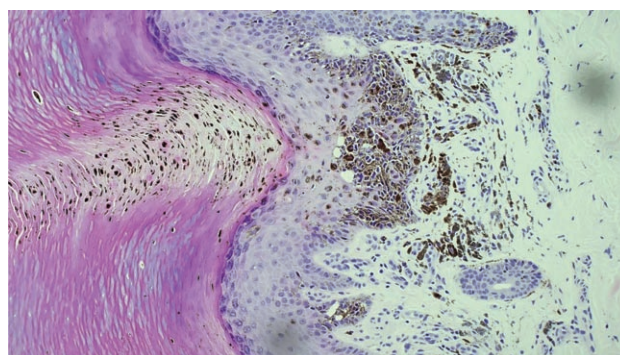


Figure 2. H&E (10X)

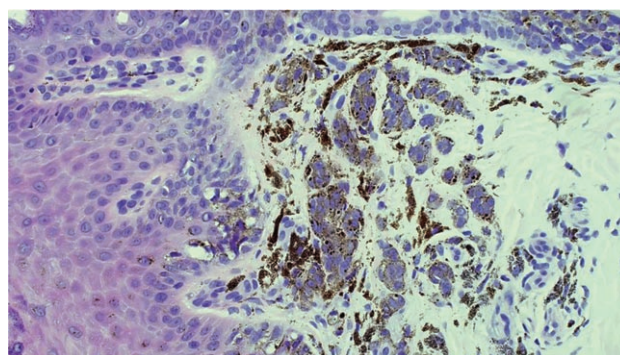


Figure 3. H&E (20X)

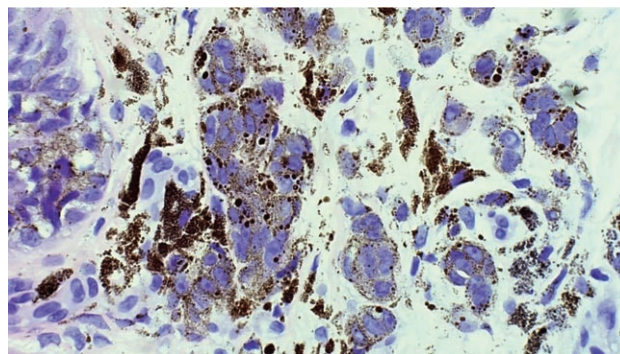


Figure 4. H&E (40X)

**Social Hygiene Service, Department of Health,
Centre for Health Protection, Hong Kong**

THB Chan, MBBS(HKU), MRCP(UK)

**Division of Histopathology and Cytology, Public
Health Laboratory Services Branch, Department
of Health, Centre for Health Protection, Hong Kong**

MTM Ng, MBChB, FHKAM(Pathology)

Correspondence to: Dr. THB Chan
3/F, West Kowloon Health Centre, Cheung Sha Wan
Government Offices, 303 Cheung Sha Wan Road, Sham
Shui Po, Kowloon

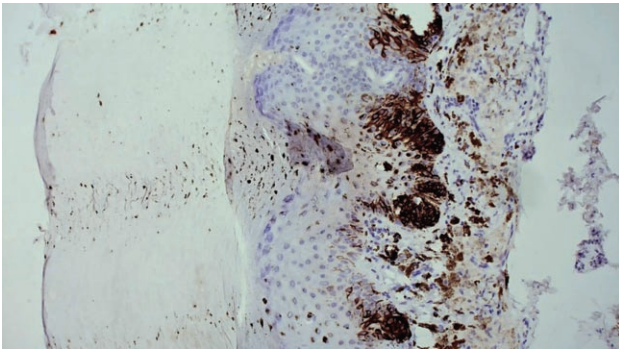


Figure 5. Melan-A stain

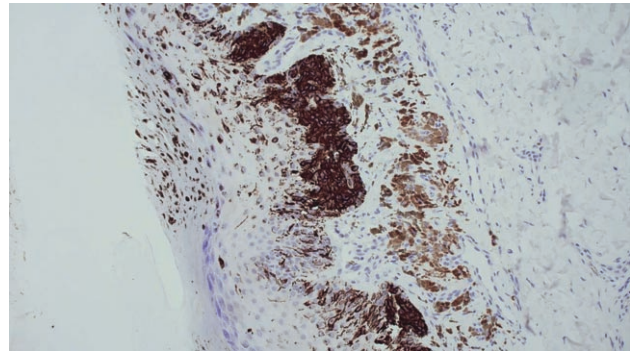


Figure 7. HMB-45 stain

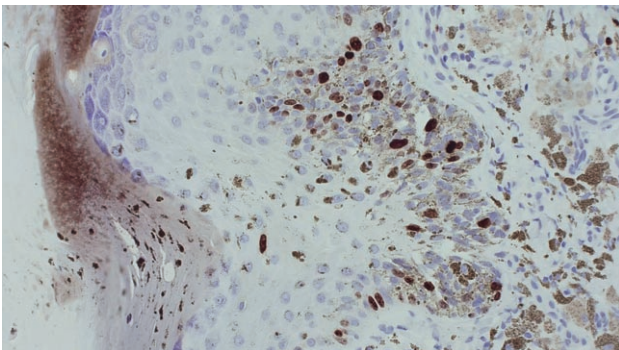


Figure 6. Ki-67 stain

Questions

1. What are the differential diagnoses?
2. What are the histological findings of the skin biopsy?
3. What is the diagnosis?
4. What is the treatment?

(Answers on pages 94-95)