

Dermato-venereological Quiz

KK Jong 莊國坤 and ECY Chu 朱灼欣

A middle-aged woman presented with some grey-blue macules over her abdomen and back. The macules were of variable size and shape (Figure 1). The lesions were neither itchy nor

tender. She had enjoyed good past health and was not on any chronic medications. A skin biopsy was done over the abdomen (Figures 2 & 3).

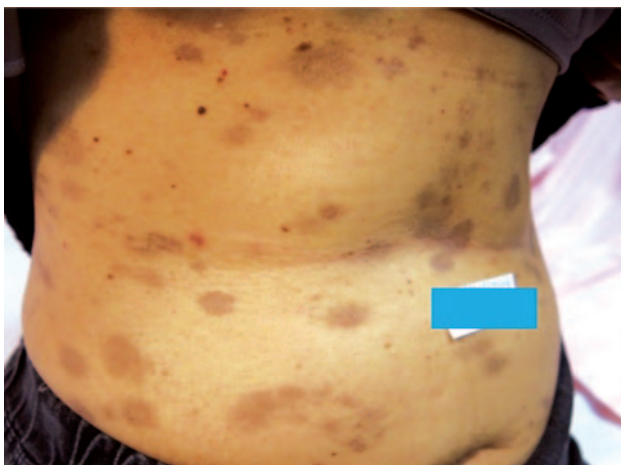


Figure 1. Multiple grey-blue macules over the abdomen.

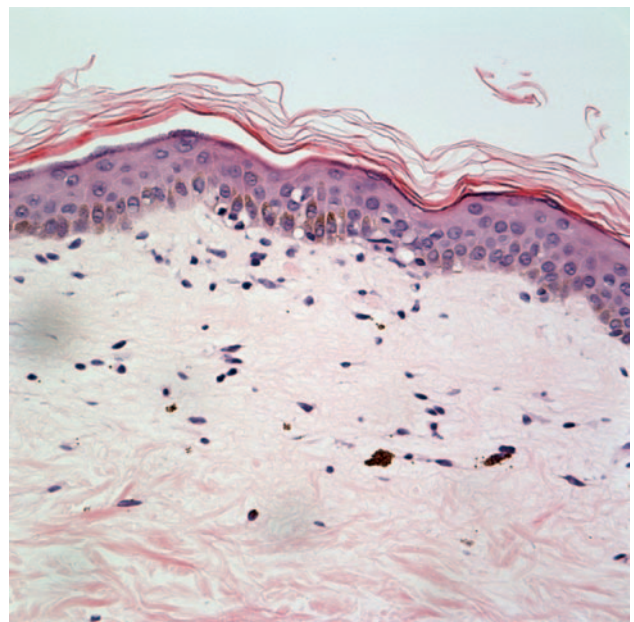


Figure 2. Small lymphocytes at the dermoepidermal junction.

Social Hygiene Service, Department of Health, Hong Kong

ECY Chu, FHKCP, FHKAM(Medicine)

Histopathology and Cytology Laboratory, Public Health Laboratory Centre, Department of Health, Hong Kong

KK Jong, FHKCPATH, FHKAM(Pathology)

Correspondence to: Dr. ECY Chu

Wan Chai Social Hygiene Clinic, 7/F Tang Chi Ngong Specialist Clinic, 284 Queen's Road East, Wan Chai, Hong Kong

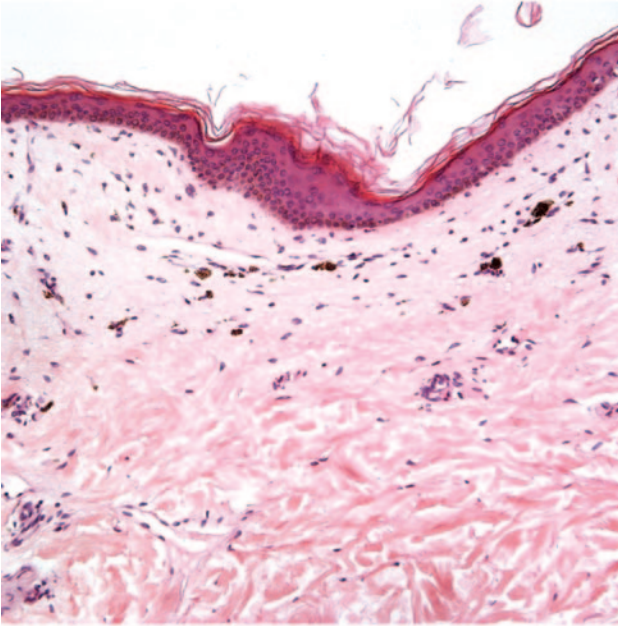


Figure 3. Prominent melanophages in the upper dermis.

Questions

1. What is the differential diagnosis?
2. What are the histology findings?
3. What is the diagnosis?
4. What is the treatment?
5. What is the prognosis of the condition?

(Answers on page 219)