

## Dermato-venereological Quiz

KL Yuen 原嘉麗 and WY Lam 林偉業

A 38-year-old Chinese gentleman presented with multiple mild itchy erythematous papules and nodules over the occipital scalp for about two years. The nodules were static in size with occasional bleeding (Figure 1). He enjoyed good past health and there was no history of trauma. An incisional biopsy was performed on the scalp lesion (Figures 2 & 3).



**Figure 1.** Multiple erythematous papules and nodules over the occipital scalp.

**Social Hygiene Service, Department of Health,  
Centre for Health Protection, Hong Kong**

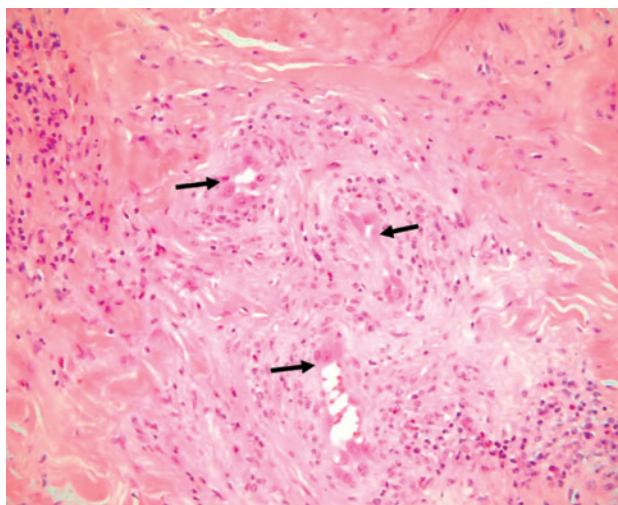
KL Yuen, MBChB, MRCP(UK)

**Histopathology and Cytology Laboratory, Public  
Health Laboratory Centre, Department of Health,  
Hong Kong**

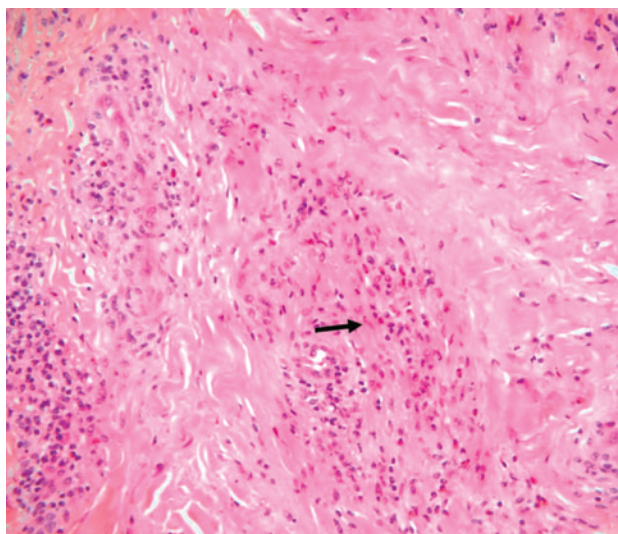
WY Lam, MHKCPATH

Correspondence to: Dr. KL Yuen

Yaumatei Dermatological Clinic, 12/F, 143 Battery Street,  
Yaumatei, Kowloon



**Figure 2.** Epithelial endothelial cells.



**Figure 3.** Mixed inflammatory cells with many eosinophils.

### Questions

1. What are the clinical differential diagnoses?
2. What are the histological findings?
3. What is the diagnosis?
4. What are the treatment options?

(Answers on page 99)